

## TABLE OF CONTENTS

---

	Page
<a href="#"><u>KEY DATA</u></a> .....	2
<a href="#"><u>ECONOMIC ASSUMPTIONS</u></a> .....	3
<a href="#"><u>CHART -- TUR-IUR COMPARISON</u></a> .....	4
<a href="#"><u>SUMMARY OF UI ESTIMATES</u></a> .....	5
<a href="#"><u>COMPARISON OF PROJECTIONS</u></a> .....	6
<a href="#"><u>CHART -- COMPARISON OF OUTLAY ESTIMATES</u></a> .....	7
<a href="#"><u>HISTORICAL UI PROGRAM DATA</u></a> .....	8
<a href="#"><u>CHART -- HISTORICAL AND PROJECTED OUTLAYS</u></a> .....	9
<a href="#"><u>STATUS OF STATE ACCOUNTS</u></a> .....	10
<a href="#"><u>CHART -- OUTLAYS VS. REVENUES</u></a> .....	11
<a href="#"><u>STATUS OF ESAA</u></a> .....	12
<a href="#"><u>STATUS OF EUCA</u></a> .....	13
<a href="#"><u>STATUS OF FUA</u></a> .....	14
<a href="#"><u>DEFINITIONS</u></a> .....	15

## KEY DATA -- FY 2011/FY 2012

Total Unemployment Rate (Civilian)	9.5 /	8.8 %
Insured Unemployment Rate	3.6 /	3.6 %

### OUTGO

♦ Benefits Paid (All Programs)	\$	129.5 /	91.6 billion
Number of First Payments (State UI+UCFE+UCX)		12.3 /	12.5 million
Average Duration of Benefits (All Programs)		34.8 /	23.9 weeks
Average Weekly Benefit Amount (All Programs)	\$	303.00 /	305.70
♦ Administrative Costs	\$	5.5 /	4.8 billion

### INCOME

♦ Payroll Taxes			
FUTA	\$	6.7 /	5.2 billion
State	\$	44.7 /	49.7 billion
♦ Interest on State Loans	\$	1.22 /	1.79 billion
Interest Rate (Calendar Year)		<b>4.0869% /</b>	<b>3.38%</b>

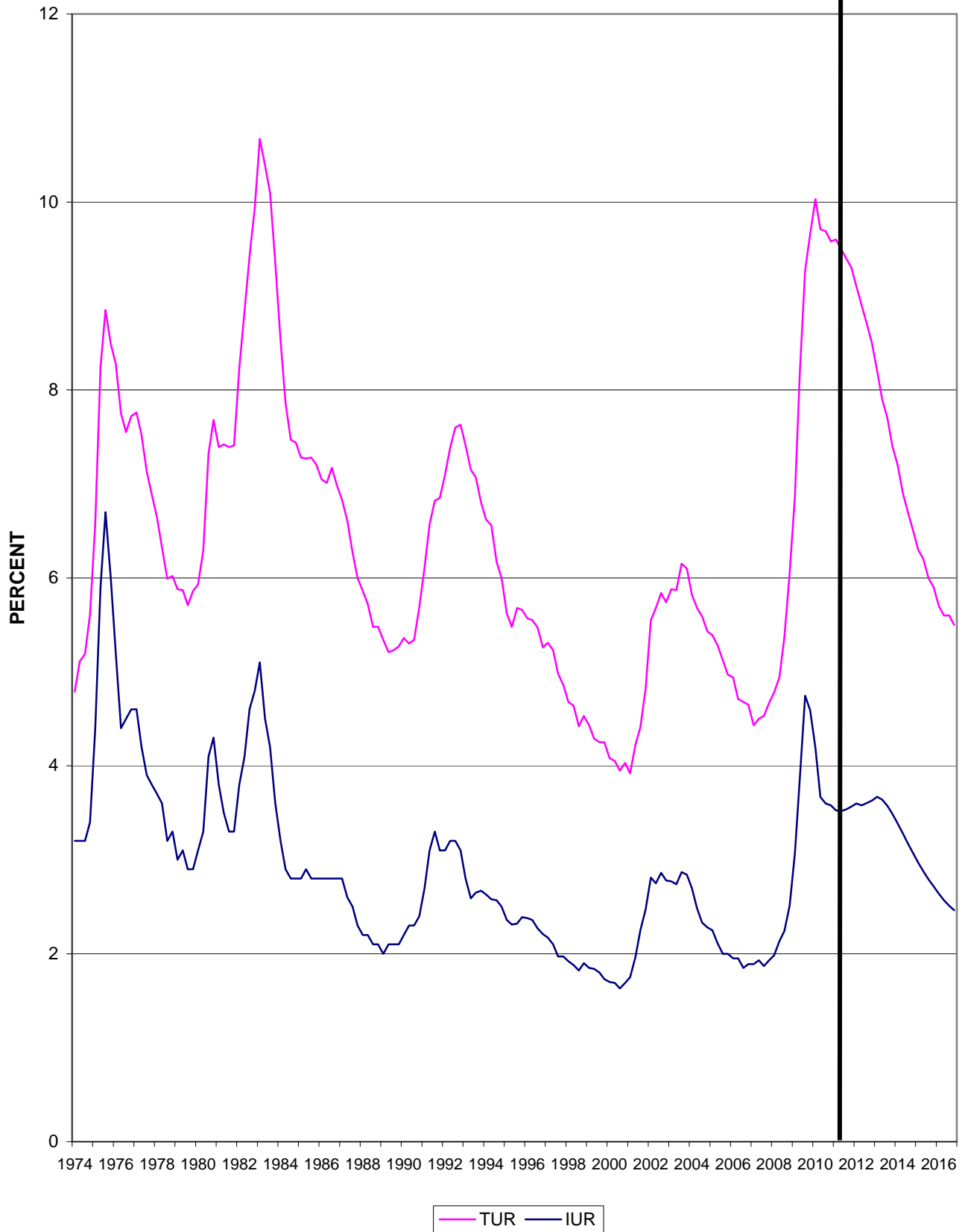
### TRUST FUND BALANCES (END OF FISCAL YEAR)

♦ State Trust Fund Accounts (Excluding Loans)	\$	-42.6 /	-55.7 billion
♦ Employment Security Administration Account (ESAA)	\$	0.5 /	0.5 billion
♦ Extended Benefit Account (EUCA) (Excluding General Fund Advances)	\$	-13.2 /	-15.3 billion
♦ Loan Account (FUA) (Excluding General Fund Advances)	\$	-35.8 /	-47.6 billion

**ECONOMIC ASSUMPTIONS  
FY 2012 President's Budget**

<b>Fiscal Year</b>	<b>Civilian TUR (%)</b>	<b>IUR (%)</b>	<b>Change in GDP Price Index (%)</b>	<b>Real GDP Growth (%)</b>
2010	9.8	3.7	0.8	2.2
2011	9.5	3.6	1.3	2.6
2012	8.8	3.6	1.4	3.4
2013	7.8	3.5	1.6	4.3
2014	6.8	3.1	1.7	4.4
2015	6.1	2.7	1.7	3.9
2016	5.6	2.5	1.7	3.4

# U.S. UNEMPLOYMENT RATES



FY 2012 President's Budget  
Rates are Seasonally Adjusted

Source: USDOL/BLS and USDOL/ETA/OUI  
Prepared by: USDOL/ETA/OUI  
Division of Fiscal and Actuarial Services

**UI PROGRAM ESTIMATES**  
**FY 2012 President's Budget**  
**(Billions of Dollars)**

<b>FISCAL YEAR</b>	<b>2011</b>	<b>2012</b>	<b>2013</b>	<b>2014</b>	<b>2015</b>	<b>2016</b>
Civilian TUR (%)	9.5	8.8	7.8	6.8	6.1	5.6
IUR(%)	3.6	3.6	3.5	3.1	2.7	2.5
Coverage (millions)	126.7	129.2	132.2	134.8	136.8	138.4
AWBA (Regular)	297.95	306.72	316.04	327.10	339.99	354.08
Benefit Outlays (All Programs)	129.49	91.58	67.63	62.21	58.42	55.96
<b><u>STATE UI</u></b>						
First Payments (millions)	12.1	12.4	11.9	11.0	10.1	9.6
Regular Benefit Exhaustions (millions)	6.3	6.4	6.1	5.3	4.6	4.1
Regular Benefits Paid	60.96	64.29	64.77	60.34	56.68	54.38
EB (State Share)	0.00	0.65	0.39	0.07	0.06	0.00
State Collections	44.70	49.67	53.68	55.89	56.62	56.65
Interest Earned	0.27	0.20	0.15	0.14	0.18	0.31
<b><u>FEDERAL ACCOUNTS</u></b>						
FUTA Collections (1) (2)	6.71	5.15	5.30	5.43	5.54	5.64
-To EUCA	1.34	1.03	1.06	1.09	1.11	1.13
-To ESAA	5.37	4.12	4.24	4.34	4.43	4.51
Outlays						
-Federal EB Share	9.49	2.71	0.39	0.07	0.06	0.00
-EUC08	55.38	21.89	0.00	0.00	0.00	0.00
-Administrative Costs	5.47	4.78	4.40	4.44	4.54	4.64
FECA Outlays	1.50	1.24	1.13	1.07	1.05	1.03
-UCFE	0.65	0.44	0.38	0.36	0.35	0.35
-UCX	0.85	0.80	0.75	0.71	0.70	0.68
Trade Benefits	0.23	0.79	0.95	0.67	0.59	0.55
Federal Additional Compensator	1.92	0.00	0.00	0.00	0.00	0.00

(1) Excluding Reduced Credits

(2) Under current law, the effective FUTA tax rate falls from 0.8% to 0.6% after June 2011.

Note: Administrative costs for years beyond 2012 are based on growth factors applied to all programs in the Federal budget.

**COMPARISON OF PROJECTIONS**  
**(Billions of Dollars)**

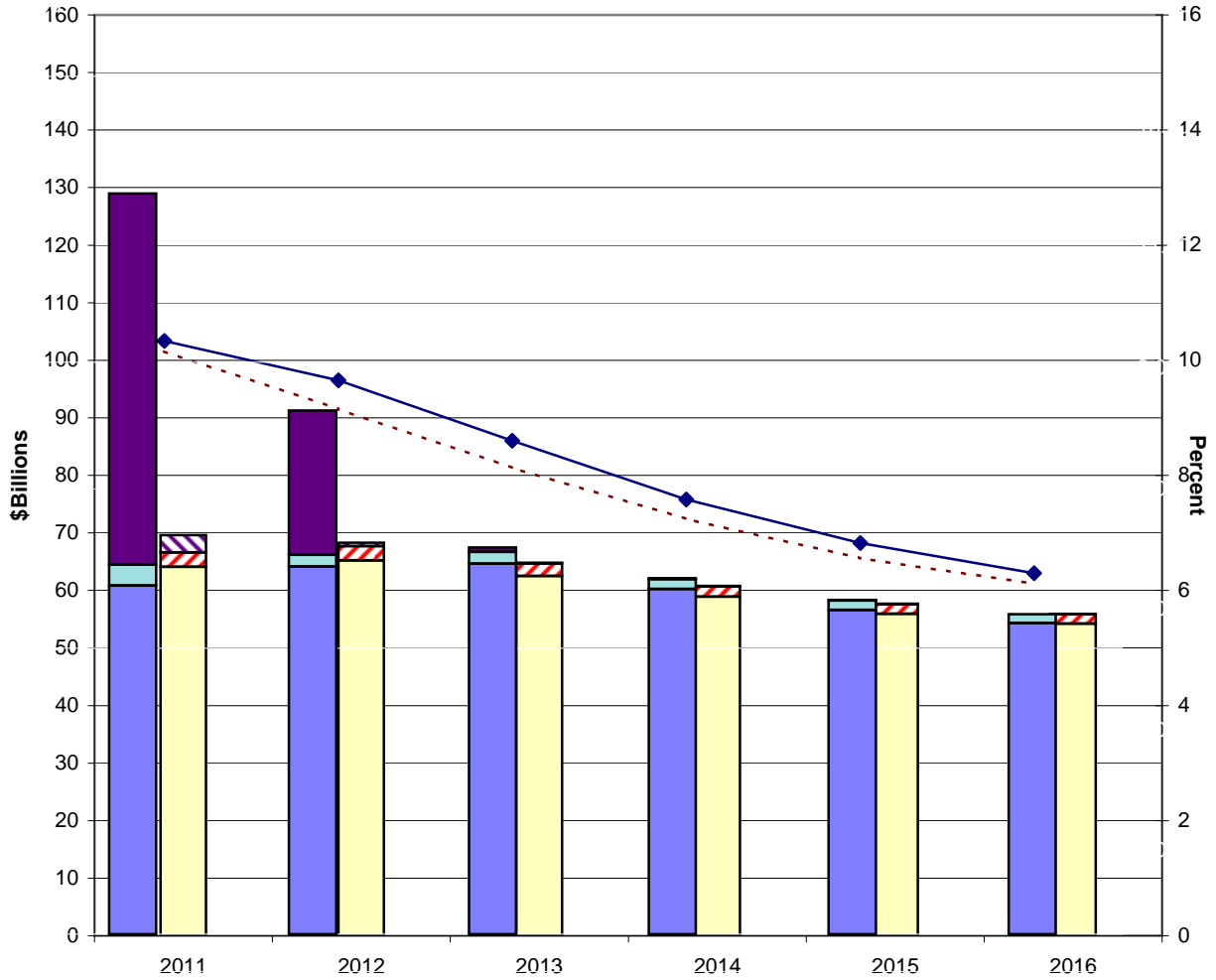
	FY 2012 President's Budget		FY 2011 Midsession Review	
	FY 2011	FY 2012	FY 2011	FY 2012
Civilian TUR (%)	9.5	8.8	9.3	8.3
IUR (%)	3.6	3.6	3.7	3.6
AWBA	297.95	306.72	296.92	303.87
Benefits				
-Regular	60.96	64.29	64.09	65.20
-EB	9.49	3.36	3.02	0.57
-EUC08	55.38	21.89	0.03	0.00
Revenues				
-State	44.70	49.67	47.22	52.36
-FUTA (1)	6.71	5.15	6.80	5.39
State Loans				
-Loans	24.17	30.00	28.51	29.86
-Repayments (2)	14.20	18.09	15.02	19.51
-Interest	1.22	1.79	1.42	2.20
-Balance	50.12	62.03	52.64	63.00
Balances				
-State Accounts (3)	-42.57	-55.72	-48.20	-59.16
-EUCA (3)	-13.17	-15.33	-2.80	-2.09
-FUA (3)	-35.80	-47.58	-38.24	-48.43

(1) Excluding reduced credits

(2) Including reduced credits

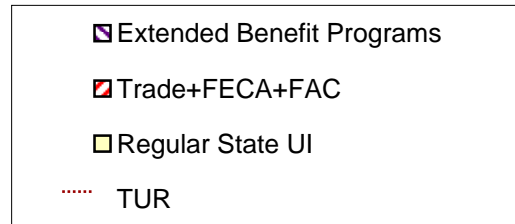
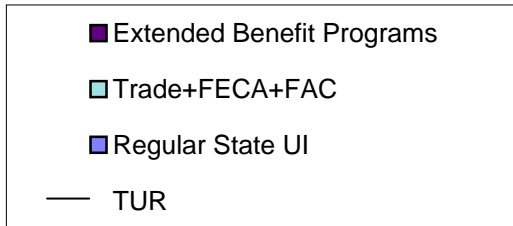
(3) Net balances excluding loans/advances

# UI Program Estimates



FY 2012 President's Budget

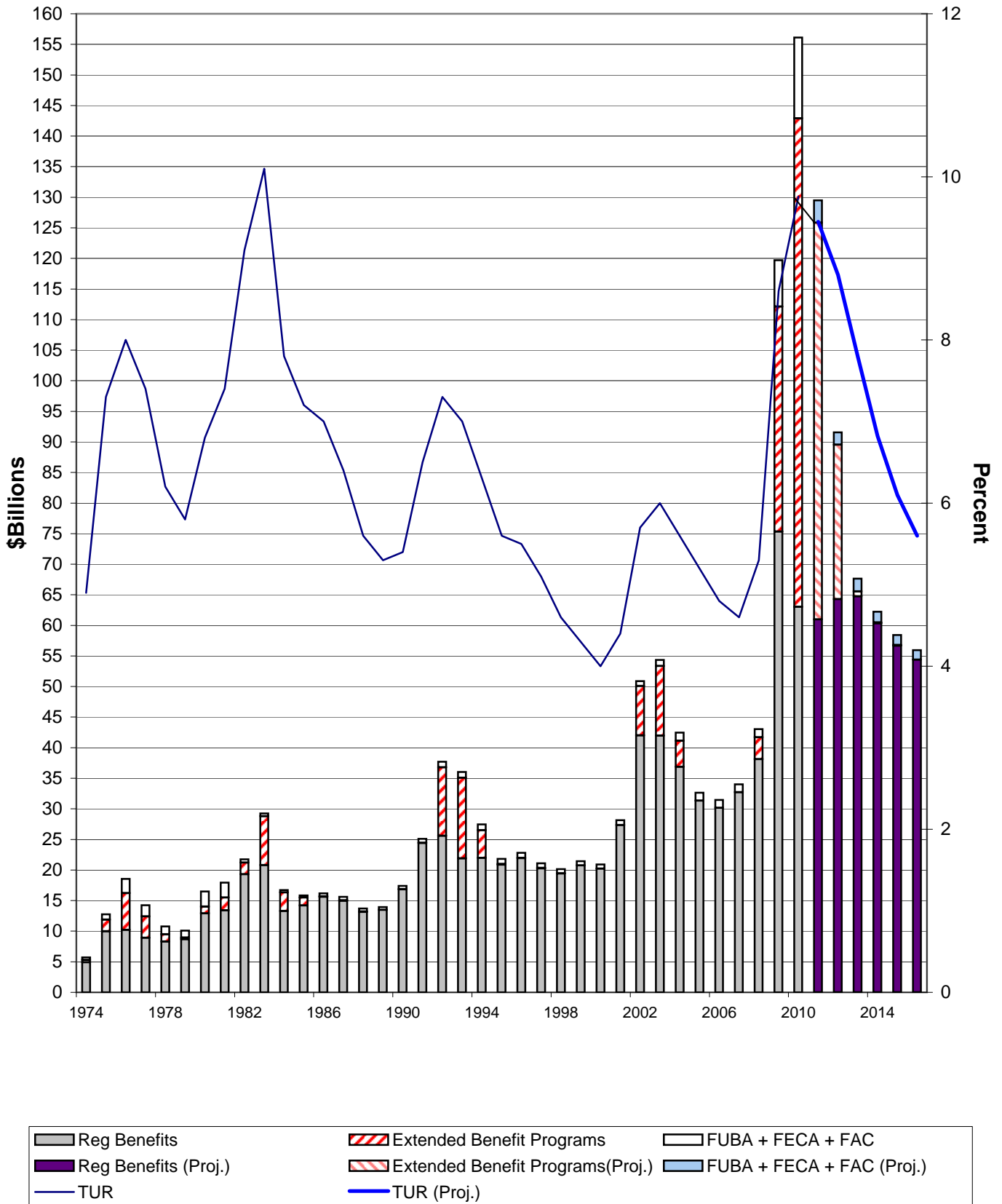
FY 2011 Midsession Review



## HISTORICAL UI PROGRAM STATISTICS (Billions of Dollars)

FISCAL YEAR	2004	2005	2006	2007	2008	2009	2010
Civilian TUR (%)	5.6	5.2	4.8	4.6	5.3	8.6	9.8
IUR (%)	2.5	2.1	2.0	1.9	2.2	4.1	3.7
Coverage (millions)	127.0	129.4	131.3	133.4	133.7	128.3	125.6
AWBA (Regular)	253.61	257.94	265.52	276.7	286.5	298.96	291.38
Benefit Outlays (All Programs)	42.45	32.61	31.46	32.70	43.05	119.69	156.37
<b><u>STATE UI</u></b>							
First Payments (millions)	8.7	8.0	7.4	7.5	8.8	14.4	11.3
Regular Benefit							
Exhaustions (millions)	3.9	3.0	2.7	2.6	3.1	6.4	7.0
Regular Benefits Paid	36.85	31.22	30.15	31.41	38.14	75.34	63.04
EB (State Share)	0.08	0.00	0.01	0.01	0.01	0.00	0.24
State Collections	32.73	35.08	35.94	33.71	32.22	31.14	38.28
<b><u>FEDERAL ACCOUNTS</u></b>							
FUTA Collections	6.59	6.69	7.10	7.29	7.22	6.66	6.38
-To EUCA	1.19	1.51	1.47	1.32	1.45	1.32	1.32
-To ESAA	5.40	5.18	5.63	5.96	5.76	5.34	5.06
Outlays							
-Federal EB Share	0.08	0.00	0.01	0.01	0.01	4.12	7.76
-Administrative Costs	3.88	3.82	3.85	3.68	3.92	4.32	5.50
-TEUC	4.12	0.00	0.01	0.00	0.00	0.00	0.00
-EUC08	0.00	0.00	0.00	0.00	3.55	32.66	72.09
FUBA/FECA Outlays	1.32	1.38	1.31	1.30	1.36	1.09	1.52
-UCFE-UCX	0.79	0.79	0.80	0.74	0.72	0.96	1.32
-Trade	0.53	0.59	0.51	0.57	0.64	0.13	0.20
-Federal Additional Compensation	0.00	0.00	0.00	0.00	0.00	6.48	11.71

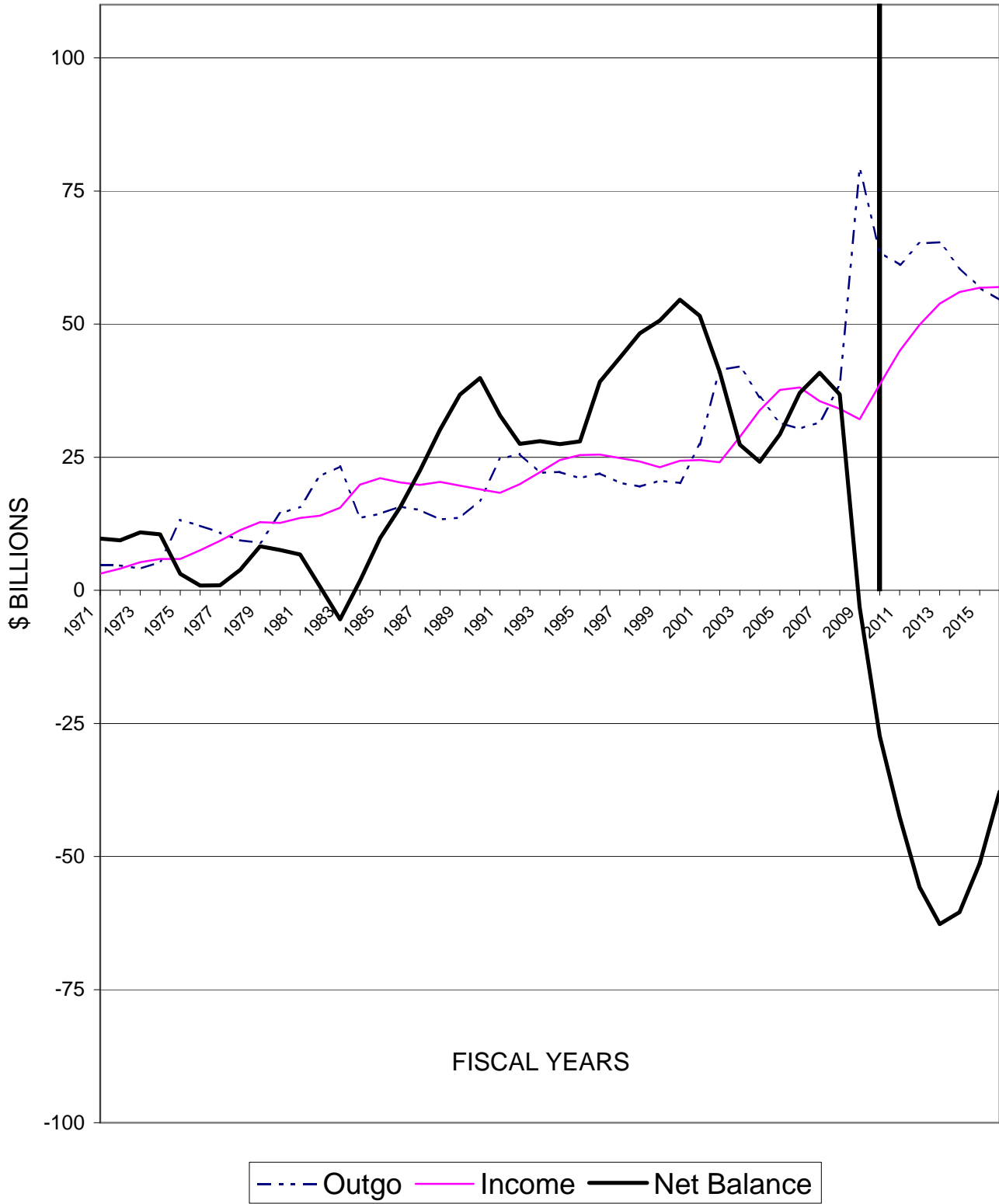
# UI PROGRAM OUTLAYS



**STATUS OF STATE ACCOUNTS**  
**FY 2012 President's Budget**  
**(Billions of Dollars)**

FISCAL YEAR	2010	2011	2012	2013	2014	2015	2016
<b><u>Income</u></b>	--	69.94	79.86	83.39	81.85	80.94	77.23
Collections	--	44.70	49.67	53.68	55.89	56.62	56.65
Interest Earnings	--	0.27	0.20	0.15	0.14	0.18	0.31
Loans	--	24.17	30.00	29.57	25.82	24.11	19.75
Excess Reduced Credits	--	0.00	0.00	0.00	0.00	0.03	0.53
Reed Act/UI Modernization Transfers		0.80	0.00	0.00	0.00	0.00	0.00
<b><u>Outgo</u></b>	--	75.15	81.10	84.08	81.67	79.41	72.76
Benefits	--	60.96	64.95	65.15	60.41	56.73	54.38
Loan Repayments	--	13.97	15.95	18.72	21.08	22.50	18.21
Administration	--	0.22	0.21	0.20	0.19	0.18	0.17
<b>Balance</b> (End of Year)	12.76	7.55	6.31	5.63	5.80	7.33	11.80
Outstanding Loans	40.15	50.12	62.03	68.33	66.26	58.66	49.60
<b>Net Balance</b> (Excluding Loans)	-27.38	-42.57	-55.72	-62.71	-60.46	-51.33	-37.81

# STATE TRUST FUND STATUS



FY 2012 President's Budget

Note: Values are net of loans

Source: USDOL\ETA\OUI  
Division of Fiscal and Actuarial Services

**STATUS OF ADMINISTRATION ACCOUNT (ESAA)**  
**FY 2012 President's Budget**  
**(Billions of Dollars)**

FISCAL YEAR	2010	2011	2012	2013	2014	2015	2016
<b><u>Income</u></b>	--	6.81	5.93	5.47	4.59	4.79	4.98
FUTA Income (1)	--	5.37	4.12	4.24	4.34	4.43	4.51
General Revenues	--	0.80	0.29	0.00	0.00	0.00	0.00
Interest Earnings	--	0.03	0.02	0.03	0.04	0.05	0.07
Transfers from FUA/EUCA		0.60	1.50	1.20	0.20	0.30	0.40
<b><u>Outgo</u></b>	--	7.07	5.88	5.20	4.44	4.54	4.64
State Administration	--	5.29	4.59	4.21	4.25	4.34	4.44
-UI	--	4.10	3.57	3.21	3.26	3.33	3.41
-ES,BLS,VETS	--	1.19	1.02	1.00	0.99	1.01	1.03
Federal Administration	--	0.19	0.19	0.19	0.19	0.20	0.20
Transfers to FUA/EUCA		1.60	1.10	0.80	0.00	0.00	0.00
<b>Preliminary Balance</b> (End of Year)	0.72	0.46	0.50	0.76	0.91	1.15	1.48
FUA/EUCA Overflow	0.00	0.00	0.00	0.00	0.00	0.00	0.00
<b>Balance</b>	0.72	0.46	0.50	0.76	0.91	1.15	1.48
-Ceiling (2)	1.77	1.75	1.76	1.71	1.75	1.79	1.83
-Excess	0.00	0.00	0.00	0.00	0.00	0.00	0.00
To EUCA	0.00	0.00	0.00	0.00	0.00	0.00	0.00
To FUA	0.00	0.00	0.00	0.00	0.00	0.00	0.00
To States (Reed Act)	0.00	0.00	0.00	0.00	0.00	0.00	0.00

(1) Under current law, the effective FUTA tax rate falls from 0.8% to 0.6% after June 2011

(2) Statutory ceiling is 40% of the current year's appropriations.

Note: Administrative costs for years beyond 2012 are based on growth factors applied to all programs in the Federal budget.

**STATUS OF EXTENDED BENEFIT ACCOUNT (EUCA)**  
**FY 2012 President's Budget**  
**(Billions of Dollars)**

FISCAL YEAR	2010	2011	2012	2013	2014	2015	2016
<b><u>Income</u></b>	--	64.75	25.02	1.07	1.10	1.12	1.15
FUTA Income (1)	--	1.34	1.03	1.06	1.09	1.11	1.13
Interest Earnings	--	0.00	0.00	0.01	0.01	0.02	0.02
General Revenue for EUC08	--	52.61	21.89	0.00	0.00	0.00	0.00
Overflow from ESAA	--	0.00	0.00	0.00	0.00	0.00	0.00
Transfers from FUA/ESAA	--	0.00	0.00	0.00	0.00	0.00	0.00
General Fund Advances	--	10.80	2.10	0.00	0.00	0.00	0.00
<b><u>Outgo</u></b>	--	64.88	24.60	0.39	0.07	0.06	0.00
EB Outlays -- Fed Share	--	9.49	2.71	0.39	0.07	0.06	0.00
EUC08	--	55.38	21.89	0.00	0.00	0.00	0.00
Transfers to FUA/ESAA	--	0.00	0.00	0.00	0.00	0.00	0.00
Repayment to General Fund	--	0.00	0.50	0.30	0.60	0.60	0.70
Interest on General Fund Advances		0.32	0.48	0.45	0.43	0.44	0.48
<b><u>Balance</u></b>							
(End of Year)	1.18	0.73	0.17	0.10	0.11	0.13	0.10
Outstanding Advances	3.10	13.90	15.50	15.20	14.60	14.00	13.30
Net Balance	-1.92	-13.17	-15.33	-15.10	-14.49	-13.87	-13.20
-Ceiling (2)	22.44	22.67	23.61	24.98	26.62	28.37	30.12
-Excess	0.00	0.00	0.00	0.00	0.00	0.00	0.00

(1) Under current law, the effective FUTA tax rate falls from 0.8% to 0.6% after June 2011.

(2) Statutory ceiling is 0.5% of covered wages

**STATUS OF LOAN ACCOUNT (FUA)**  
**FY 2012 President's Budget**  
**(Billions of Dollars)**

<b>FISCAL YEAR</b>	<b>2010</b>	<b>2011</b>	<b>2012</b>	<b>2013</b>	<b>2014</b>	<b>2015</b>	<b>2016</b>
<b><u>Income</u></b>	--	33.05	38.37	42.77	44.38	47.44	42.09
Interest Earnings	--	0.14	0.09	0.04	0.10	0.18	0.21
State Repayments	--	13.97	15.95	18.72	21.08	22.50	18.21
Reduced Credits	--	0.23	2.14	4.54	6.82	9.22	10.59
State Interest Payments	--	1.22	1.79	1.97	2.09	2.15	2.08
Overflow from ESAA	--	0.00	0.00	0.00	0.00	0.00	0.00
Transfers from EUCA/ESAA	--	1.60	1.10	0.80	0.00	0.00	0.00
General Fund Advances	--	15.90	17.30	16.70	14.30	13.40	11.00
<b><u>Outgo</u></b>	--	33.50	41.54	42.80	44.34	47.43	42.17
State Loans	--	24.17	30.00	29.57	25.82	24.11	19.75
Transfers to EUCA/ESAA	--	0.60	1.50	1.20	0.20	0.30	0.40
Repayment to General Fund	--	6.70	8.70	10.50	16.60	21.20	20.30
Interest on General Fund Advances		1.23	1.34	1.53	1.72	1.82	1.72
UI Modernization Incentive Payments		0.80	0.00	0.00	0.00	0.00	0.00
<b>Balance</b>							
(End of Year)	3.78	3.33	0.16	0.13	0.17	0.18	0.10
Outstanding General Fund Advances	29.94	39.14	47.74	53.94	51.64	43.84	34.54
Net Balance	-26.16	-35.80	-47.58	-53.81	-51.47	-43.65	-34.43
-Ceiling (1)	22.44	22.67	23.61	24.98	26.62	28.37	30.12
-Excess to ESAA	0.00	0.00	0.00	0.00	0.00	0.00	0.00

(1) Statutory ceiling is 0.5% of current wages.

## **DEFINITIONS**

<b>EB</b>	Extended Benefits -- Permanent triggered program
<b>ES</b>	Employment Service
<b>ESAA</b>	Employment Security Administration Account Provides grants to states for UI and ES
<b>EUC08</b>	Emergency Unemployment Compensation, 2008 Temporary extended benefit program enacted July 2008
<b>EUCA</b>	Extended Unemployment Compensation Account Pays Federal share of EB and EUC08
<b>FAC</b>	Federal Additional Compensation Temporary \$25 supplement to all UI payments
<b>FECA</b>	Federal Employees Compensation Account Pays benefits to UCFE and UCX claimants
<b>FUA</b>	Federal Unemployment Account Makes repayable advances to state trust funds
<b>FUBA</b>	Federal Unemployment Benefits and Allowances Benefit payments to Trade Act claimants
<b>FUTA</b>	Federal Unemployment Tax Act
<b>FY</b>	Fiscal Year
<b>GDP</b>	Gross Domestic Product
<b>IUR</b>	Insured Unemployment Rate
<b>OUTYEARS</b>	Years beyond the budget year
<b>TEUC</b>	Temporary Extended Unemployment Compensation Temporary extended benefit program, March 2002 – January 2005
<b>TUR</b>	Total Unemployment Rate
<b>UCFE</b>	Unemployment Compensation for former Federal Employees
<b>UCX</b>	Unemployment Compensation for ex-Servicemen
<b>UI</b>	Unemployment Insurance
<b>UTF</b>	Unemployment Trust Fund